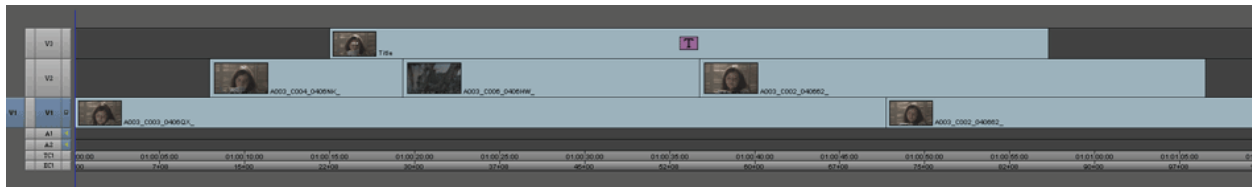
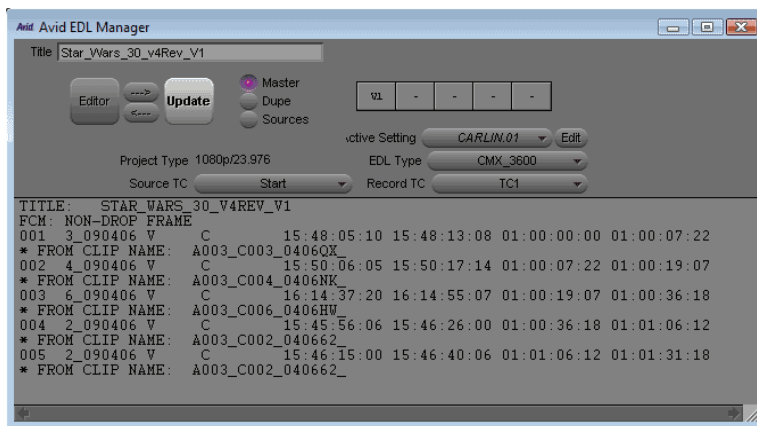
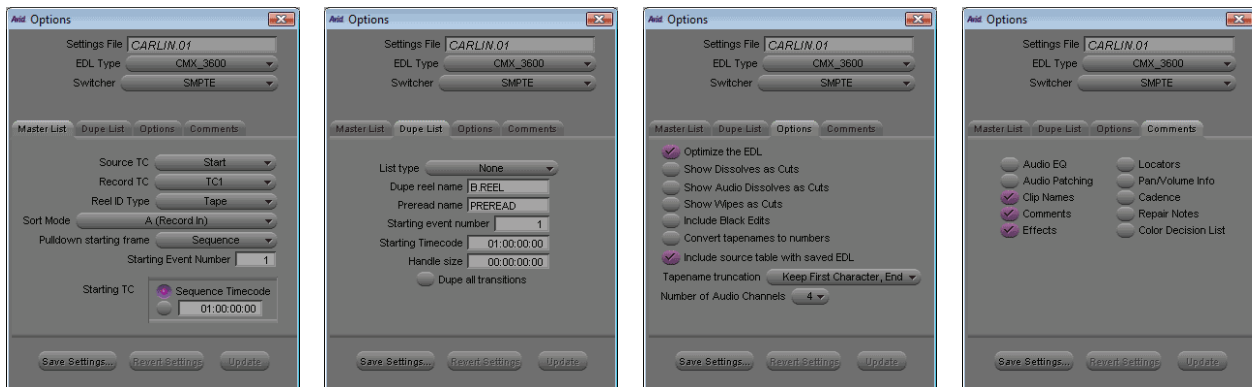
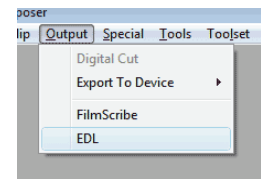


## How to output an EDL from Avid Media Composer

Before exporting the EDL, be sure the sequence is as flat as possible. This will remove unnecessary clips that slow down the finishing process as well as reduce the number of video tracks you need to export.



In this example, the clips on video track 2 should be brought down to track 1 to cover up the footage not seen in the final output. Titles and graphics should be on separate layers. From the bin, select the flattened sequence and choose EDL from the OUTPUT menu. This will launch a separate application called Avid EDL Manager. Set the options to match these settings...



You must save a separate EDL for each video track. Do this by selecting V1 from the track selector panel. Click Update. Then append V1 to the end of the Title and click Update again. It is customary to append V1, V2, V3, etc. to the end of the file name to represent the video track number. Be sure to disable the audio tracks in the track selector panel.

Save the EDL with an .edl extension. EDLs are small text files that can be opened (and modified) using Notepad or TextEdit and can be emailed very easily.

It is also a good idea to export an AAF file of the sequence (Linked Media, not embedded) and make a copy of the Avid bin that contains the sequence.